

## DriveWorks 6 - Release Notes

At DriveWorks we have a strong commitment to producing easy to use yet powerful, high-quality software, which will enable you to achieve your goals with in the shortest amount of time. We appreciate all the feedback we get from users, resellers and those looking to automate their design processes.

The DriveWorks Subscription Services Program provides a valuable communication forum for our Development Team allowing Users and Resellers to share experiences and submit Enhancement Requests. Because DriveWorks is generic software, all accepted enhancements are incorporated into the DriveWorks for all to benefit from.

We hope you'll agree that this approach is one of the factors making DriveWorks today, the feature-rich and market leading Design Automation product.

For DriveWorks 6 we have included 70% of all enhancement requests, and added some new technology we hope will excite DriveWorks Administrators old and new!

Aside from significantly enhanced performance and stability, check out some of the new and updated features in DriveWorks Administrator below.

### Installation & Licensing



First impressions are very important – The software now ships to customers on newly branded DriveWorks CDs in DriveWorks CD cases.

More importantly we wanted to make sure that installation is as straightforward as possible.

We have an updated list of pre-requisites for DriveWorks Installation. We ask users to read and follow this prior to installation. The list is available from Resellers or can be downloaded from the DriveWorks Website. Installation Prerequisites also appear in the DriveWorks Technical Guide.

We have invested in new licensing technology from Macrovision. Product Codes are sent out at the time the software is shipped and then activated online.

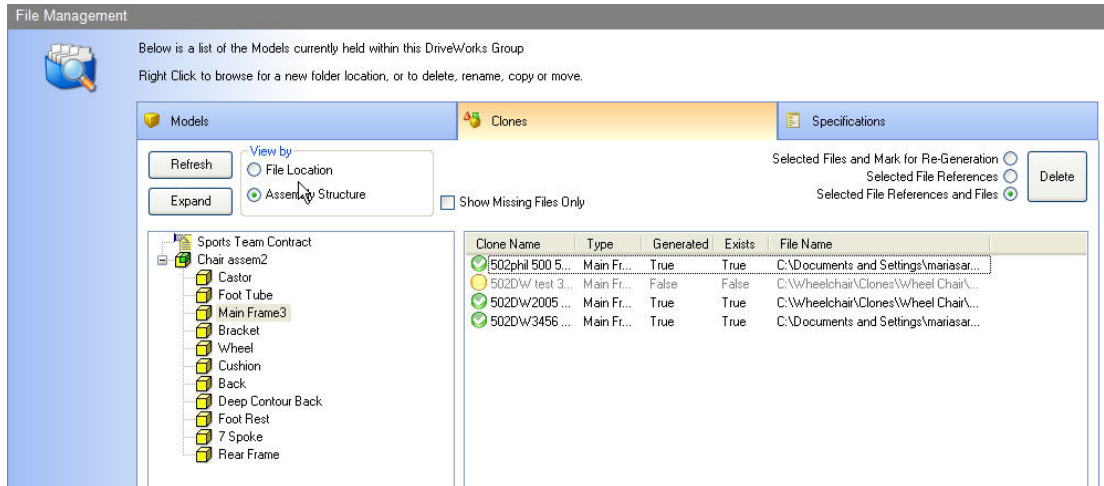
### What's New – Documentation

All documentation has been totally re-written for DriveWorks 6.

DriveWorks HELP is now presented as a compiled, searchable file that can be launched from any available Help button or by hitting the F1 key. Be sure to check out this comprehensive resource.

## What's New – File Management

The DriveWorks File Management Tool has now been incorporated into DriveWorks Administrator (it was previously a separate install). This powerful tool for copying, deleting and managing your cloned data is now integrated into the main application. Details on how to use it are included in the HELP file.



## What's New – Shortcut Keys

### Function Key

F1 - launches the compiled HELP (.chm) file

### Key shortcuts

Del - Delete the Selected Item  
 Ctrl-B - Build/ Edit the Selected Item  
 Ctrl-C - Copy Selected Item  
 Ctrl-V - Paste Clipboard Item  
 Ctrl-R - Rename Selected Item  
 Ctrl-Z - Undo Last Action  
 Ctrl-Y - Redo Last Action

Ctrl-Mouse Scroll Wheel - Magnify Rule Window text.  
 Alt-Enter - Full Screen Mode  
 Right\Down Arrow keys - Tabs forward through form control list.  
 Left\Up Arrow Keys - Tabs backward through form control list.

### Right Click

Clicking the right mouse button will display a menu that offers a range of functions and shortcuts depending on the area the right click took place.

### Double Click

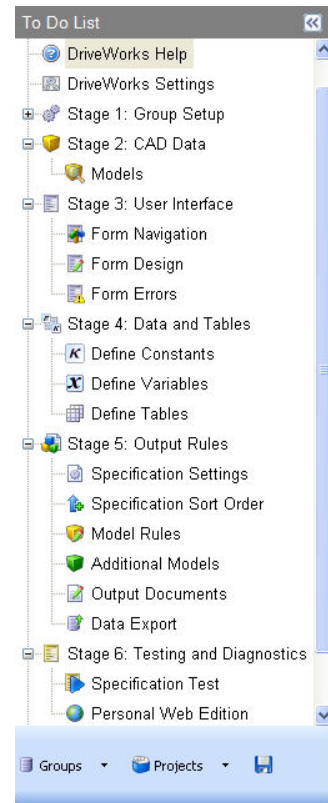
Double clicking on an item that can have a rule applied such as Variables (double click in the value column) will launch the rule builder.

## What's New – GUI

### Main Application

With use-ability, speed and performance in mind, the DriveWorks 6 Interface has been re-designed, and some new icons added.

- The **To Do** list has been restructured and new activities introduced to reflect the workflow and tasks required to be performed when setting up a DriveWorks project.
- The **To Do** list itself is dockable. This means that it can be hidden when not required giving more workspace on the desktop.
- New Wizards have been introduced for common tasks: eg setting up Groups and Projects.
- Fewer mouse clicks get results faster.

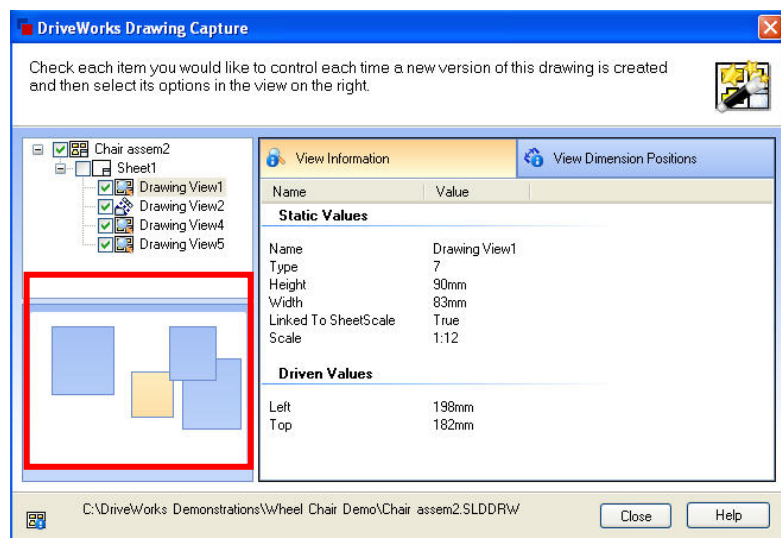


### Drawing Wizard

The DriveWorks Drawing Wizard has been redefined and a Drawing View indicator added to aid selection.

All sheet information is presented in the same window.

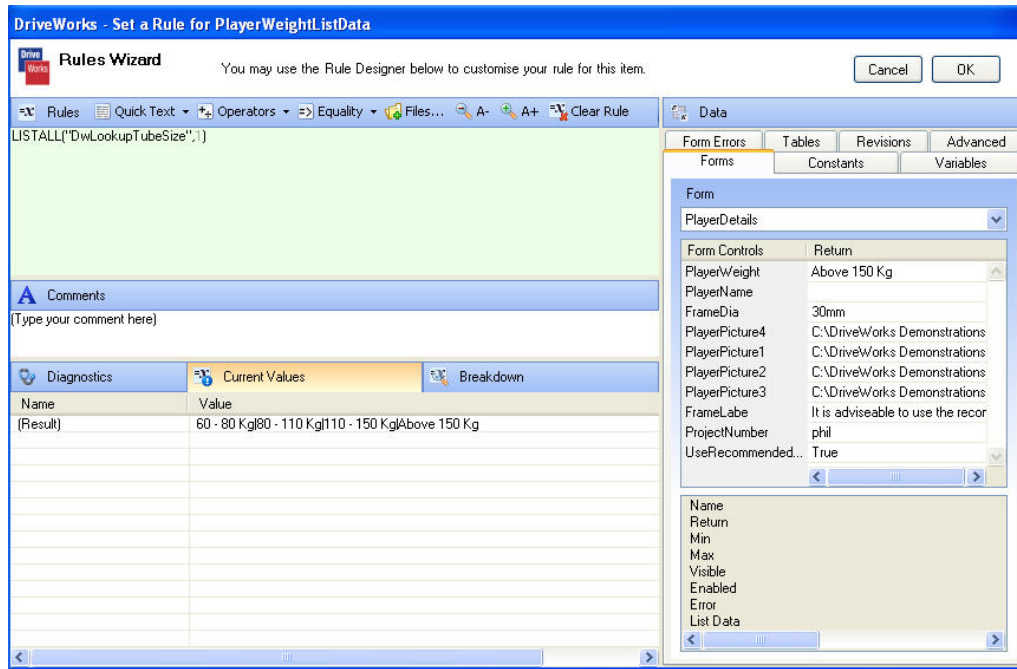
Dimension capture now shows dimensions on separate layers



- Drawing View Indicator

### Rules Wizard

With ease of use as the objective, the DriveWorks Rules Wizard has been completely redesigned and new functionality added. The new Interface makes it easier to build, view and validate rules.



## Rules Intelligence

One of the features that we believe will assist most when working on a DriveWorks Implementation is Rules Intelligence.

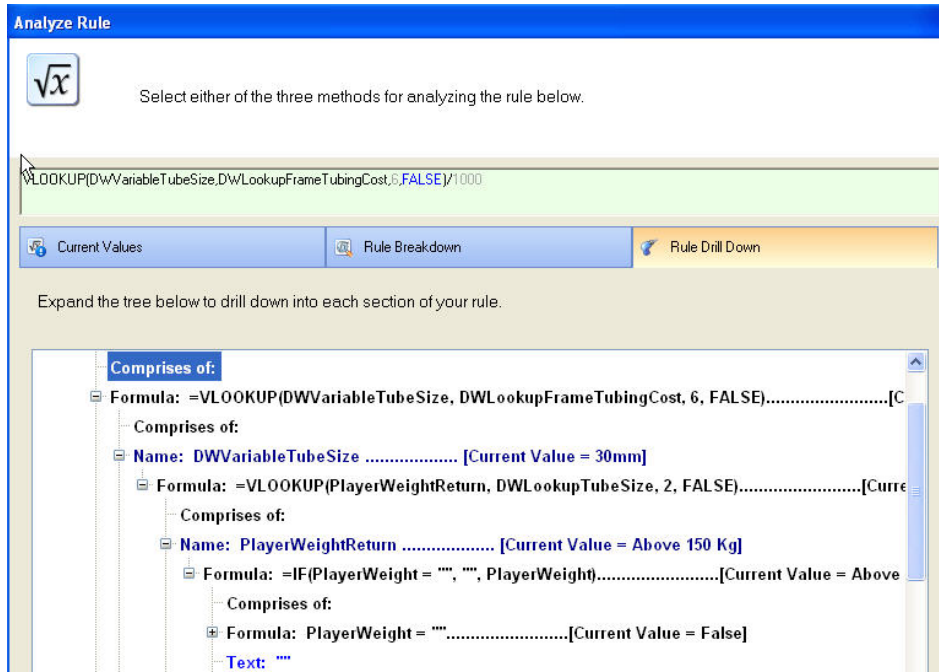
Rules Intelligence determines constituents of a rule and returns their values

Once a Rule has been built, Rules Intelligence allows you to drill down into your rule to analyze and review how it will perform.

DriveWorks uses this ability in several places; syntax highlighting, the wizard->rule->wizard round-tripping, and more.

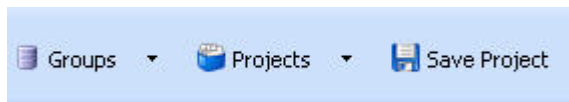
Rule Diagnostics Breakdown introduced.

Rules Intelligence separates nested functions and returns each constituent value.



Another major application of rules intelligence is the ability to rename constants, variables, and form controls - DriveWorks can automatically search for all rules that reference a changed constant/variable/form control, and update them.

## What's New –Groups & Projects



### Groups - Quick Pick & Group Wizard

Introduced, one click launches an existing Group or the Group wizard, located at the base of the To Do List

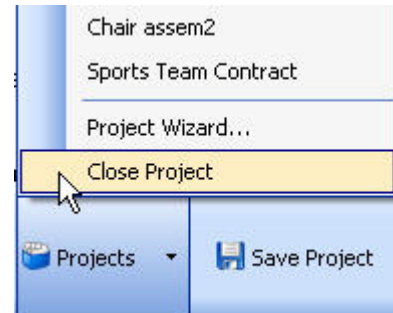
The new Group wizard lets you create and maintain Groups.

### Projects - Quick Pick, Project Wizard & Close Project

Introduced, one click launches an existing project or the project wizard, located at the base of the To Do List.

The new Project Wizard lets you create and maintain Projects.

Now when a Project is closed and the main application remains Open, and the Administrator can use the File Management Tool.



## What's New – Stage 1: Group Setup

### Group Settings/Team Settings/User Settings

New settings have been added and existing settings re-assigned to make Group and Project Set up easier to apply.

In particular check out the new Licensing Status and Plug-In set up.

### File Management

With a Group open and a Project closed it is possible to access the DriveWorks File Management Tool which has now been incorporated into the main application.

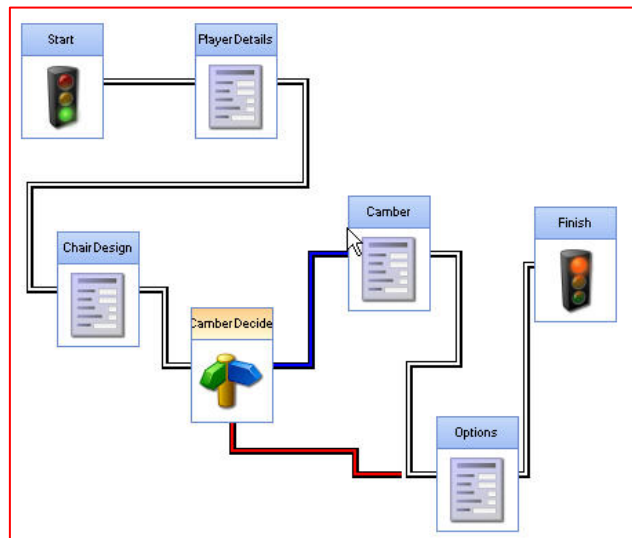
## What's New – Stage 2: CAD Data

An eDrawing automatically displays of each captured master model.  
All captured information appears together

## What's New – Stage 3: User Interface

### Form Navigation

Once you have set up your Form Navigation new functionality in DriveWorks makes it easy to check and view the navigation path. Highlight a form and view colour coded paths to and from the form to check their validity. This is particularly useful in implementations where there are numerous form with decisions included.



### Form Design

New **Editing Tools** make it even easier to create easy to work with Forms that can be used by the Administrator and others to enter their specifications.



- **Enter Test\ Design mode** - now a button making it much clearer
- **Cut, Copy & Paste** – ability to cut, copy and paste controls between forms and between projects
- **Alignment** – more control alignment functions added

- **Selection** – Multi selection of controls by holding CTRL key and selecting or by dragging a window around controls
- **Tool Box** – control text disappears when re-sizing toolbox area.
- **Control Naming** – name entry box expands into form design area when required
- **Scroll Bars** activate when controls are located beyond the visible work area

### Form Errors

Double clicking on any added error code activates the rule builder

## What's New – Stage 4: Data and Tables

Stage 4 has been renamed from Data and Lookups to Data and Tables to avoid confusion with the LOOKUP rule.

### Define Constants

Ability to sort constants on Constant Name, Constant Value and Constant category added. Click on column heading in Define Constants section.

### Define Variables

Category Folders added

Category Images added

Drag and drop variables into created folders or create a variable directly in the category.

### Define Tables

Renamed from Define Lookups to avoid confusion with the LOOKUP rule

Table wizard introduced for adding a Table to DriveWorks – includes ToolTips and validation.

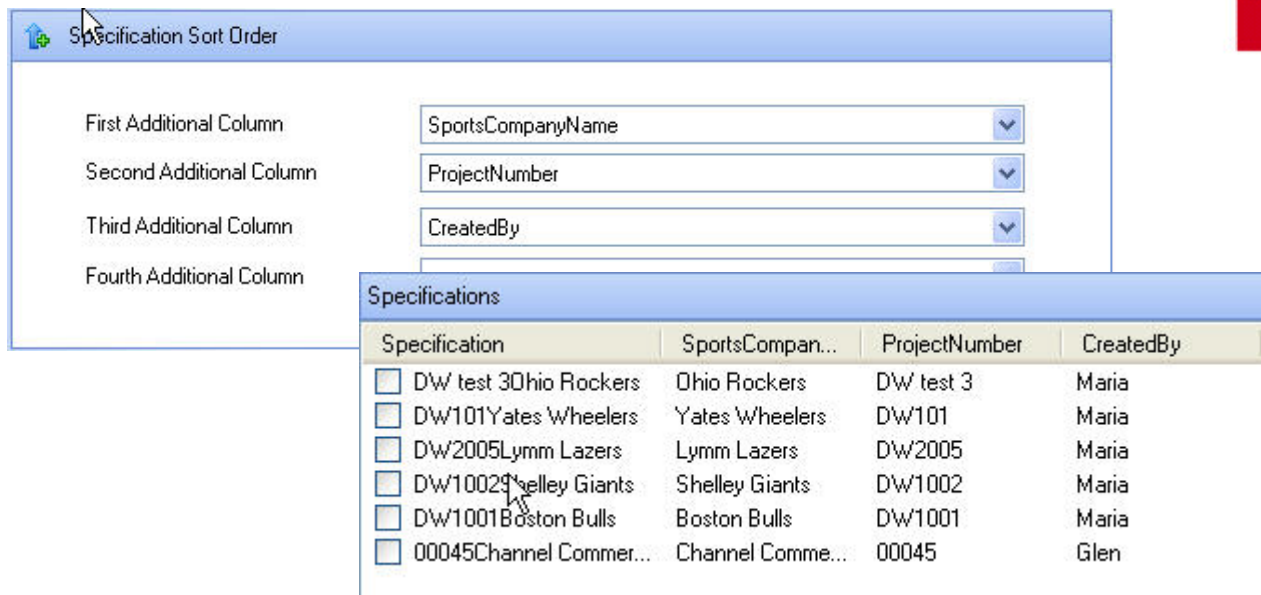
## What's New – Stage 5: Output Rules

### Specification Settings

Specification Name, Specification Path and Alternative Folders are now set in Output Rules

### Specification Sort Order

In a hurry to find a particular specification from a long list? - DriveWorks lets you sort your specifications based on the Input Names derived from your Forms/User Interface. This means for example that after Specification Name column, that you can sort by for example, Project Number, Created By or any of the Inputs that you choose to include from your Form. (See screen shot example).



## Model Rules

Filter modified

Captured drawings now have their own reference in the Model tree view.

## Additional Models

The ability to drive Additional Models can significantly enhance the performance at the point of Specification and Model Generation. DriveWorks HELP now provides more information on the benefits of driving Additional Models. This topic is also covered in more detail in DriveWorks Training.

## Output documents

A Wizard to make adding and editing Output Documents has been introduced.

There are multiple methods of driving documents:

- **Import into Design Master** - Imports a worksheet, from a Microsoft Excel Template, into the Project Design Master.
- **New Sheet in Design Master** - Creates a Worksheet in the Design Master where a document can be set up
- **External Spreadsheet** - Links to a Microsoft Excel file.
- **External Word Document** - Links to a Microsoft Word document
- **External Document** – Direct Copy. Allows a direct copy of any document type into the specified folder.
- **XML Document** - Links to an XML template file

## Data Export

Wizard with data validation to create data export link  
Results restructured to clearly show export results

## What's New – Stage 6: Testing and Diagnostics

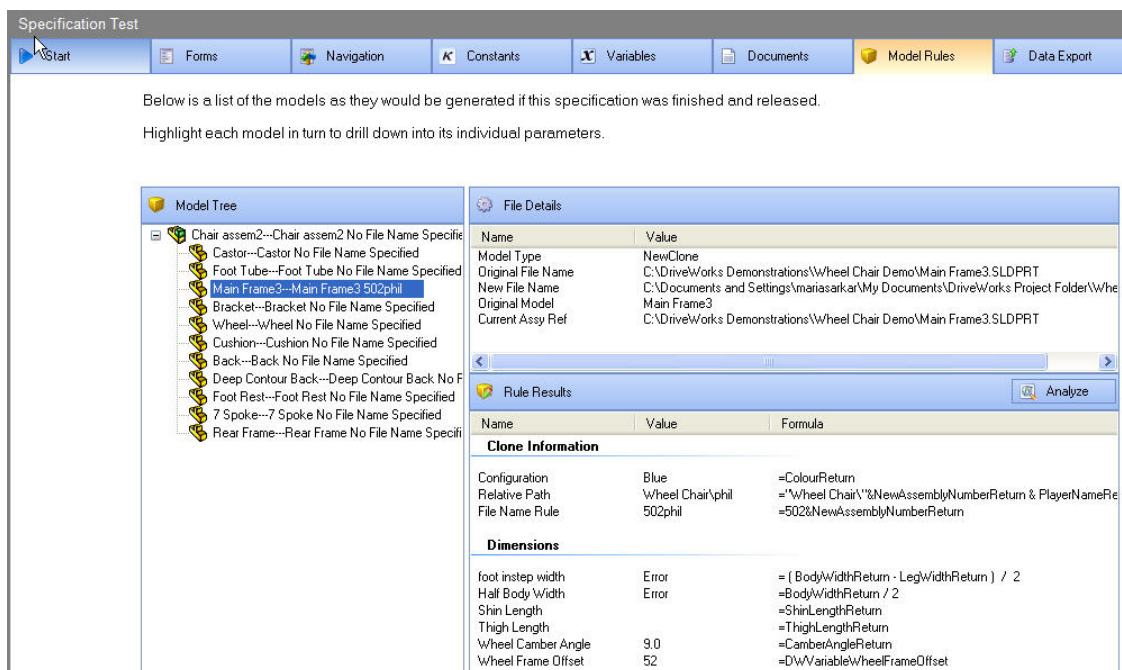
Ensuring that DriveWorks is easy to set up and easy to use are two of the underlying objectives of our Development Team. The addition of Specification Test is the direct result of a Customer Enhancement request that we believe will benefit many many users.

Users can view their Forms, Navigation, the constants and variable used, as well as Analyze how they are used and the associated rules, the Documents associated with the Implementation, the Model Rules and Data Export.



### Specification Test

- Rules Intelligence is a key element in Specification Test. It allows the Administrator to perform a complete analysis of the rules, make temporary changes to the rules and see what impact the changes would have.
- Ability to fully test an implementation within the Administrator interface
- Ability to test Form Navigation and Warnings
- Ability to change Constant values to test different scenarios (it does not change the actual rule)
- Ability to analyse Variable rules and drill into each constituent value to see which value would be selected in different scenarios
- Ability to change variable rules to test different scenarios (will not change the actual rule)
- Ability to see document results and preview the document
- Ability to see Model Rules and analyse
- Ability to build models (part or entire assembly) based on current testing inputs
- Ability to send a testing specification to be completely built
- Ability to see data export rules and analyse



Below is a list of the models as they would be generated if this specification was finished and released.  
Highlight each model in turn to drill down into its individual parameters.

Name	Value	Formula
<b>Clone Information</b>		
Configuration	Blue	=ColourReturn
Relative Path	Wheel Chair\phil	="Wheel Chair\"&NewAssemblyNumberReturn & PlayerNameRe
File Name Rule	502phil	=502&NewAssemblyNumberReturn
<b>Dimensions</b>		
foot instep width	Error	= ( BodyWidthReturn - LegWidthReturn ) / 2
Half Body Width	Error	=BodyWidthReturn / 2
Shin Length		=ShinLengthReturn
Thigh Length		=ThighLengthReturn
Wheel Camber Angle	9.0	=CamberAngleReturn
Wheel Frame Offset	52	=DWVariableWheelFrameOffset

## **Personal Web Edition.**

Personal Web Edition is included for DriveWorks Administrators that have a fully tested DriveWorks implementation and have upgraded to DriveWorksEnterprise. Personal Web Edition provides the DriveWorks Administrator with the ability to view their Implementation in a Web Browser on their machine.

## **What's New - DriveWorks Server**

DriveWorks Server now monitors and coordinates SolidWorks behaviour to optimize performance during the model generation process.

Options are now available in DriveWorks Server to release **and** generate models, release only, generate models only. DriveWorks can be set to open/close SolidWorks after so many models have been generated, can check and re-start SolidWorks based on performance needs and model size, and also determine the number of model generation attempts. These settings all provide greater flexibility and scale-ability.

## **Migrating from DriveWorks 5**

DriveWorks 6 includes a Wizard for migrating Groups and Projects created in DriveWorks (Version 5) to the latest version.

DriveWorks 6 brings many performance enhancements. The DriveWorks database has undergone significant restructuring. Subtle changes in the design master have also allowed enhancements in the application to enhance performance and reliability. The DriveWorks Migration Wizard takes care of all the re-structuring and modifications.

No validation takes place on the copied data, and an existing group can only be migrated once. Repeating the process may result in unexpected behaviour. If the Migration needs to be repeated, create a new DriveWorks 6 database to perform the migration on.

A migrated DriveWorks 6 implementation cannot be reversed back to a DriveWorks 5 implementation.

### **Contact Driveworks for details of forthcoming web casts on DriveWorks 6**

[\*info@driveworks.co.uk\*](mailto:info@driveworks.co.uk)

[\*www.driveworks.co.uk\*](http://www.driveworks.co.uk)